

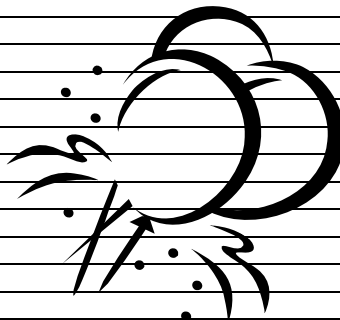
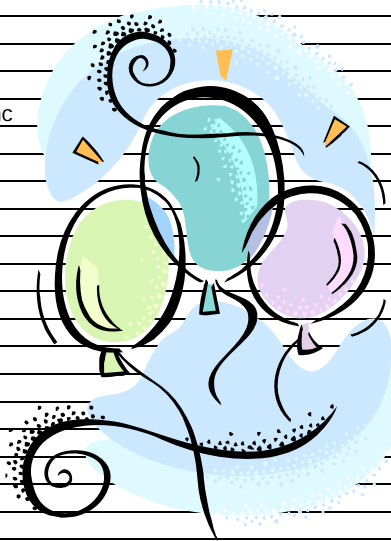


www.donationhomeloans.com.au

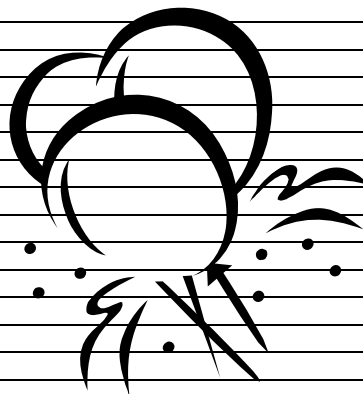
1300 30 99 79

Donation Report as at October 2006 (PERIOD - APRIL 2006)

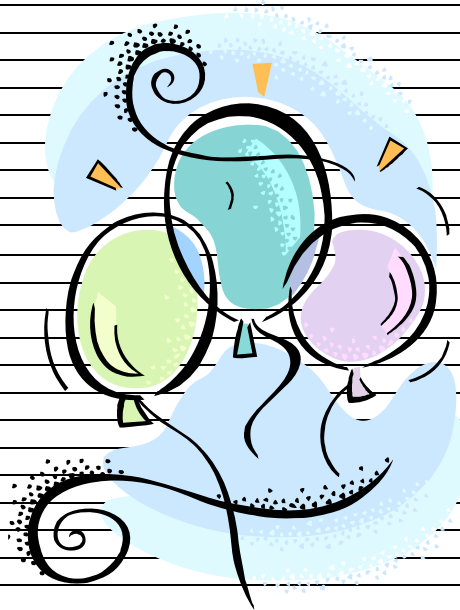
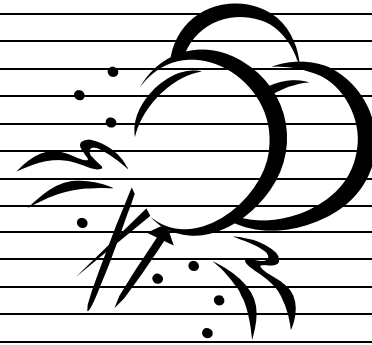
Community Partners	Month Total	Total Donations
SCOPE (VIC) Ltd	\$ 975.23	\$ 13,272.45
National Heart Foundation of Australia - Victorian Division	\$ 828.91	\$ 10,635.93
Victorian Animal Aid	\$ 632.31	\$ 8,554.91
Peter Mac Foundation	\$ 629.20	\$ 15,299.50
Emergency Memberlink (CFA & SES)	\$ 490.35	\$ 17,562.37
The Cancer Council Victoria	\$ 388.79	\$ 7,904.74
Camp Quality	\$ 354.45	\$ 5,475.52
The Salvation Army - Westcare Homeless	\$ 290.85	\$ 8,605.10
Cape Byron Trust	\$ 283.65	\$ 7,332.36
RCH Good Friday Appeal	\$ 281.03	\$ 6,857.34
Destiny Rescue Division of Trinity Care Association Inc	\$ 205.48	\$ 4,542.53
RSPCA Victoria	\$ 188.60	\$ 2,860.89
Rotary Club of Wantirna	\$ 186.28	\$ 4,631.40
Ronald McDonald House	\$ 184.01	\$ 2,673.85
Very Special Kids' Centre	\$ 179.81	\$ 3,543.96
St Bernards Cricket Club	\$ 164.99	\$ 7,133.17
Salvation Army - Outreach Project 614	\$ 155.79	\$ 2,258.25
Bonnie Babes	\$ 155.51	\$ 2,324.49
Make A Wish Foundation	\$ 151.09	\$ 6,355.05
Big Brothers Big Sisters Melbourne	\$ 144.86	\$ 2,769.91
World Vision Australia - Asian Tsunami Appeal	\$ 142.09	\$ 1,036.12
CanTeen	\$ 139.28	\$ 3,442.71
Assistance Dogs Australia	\$ 132.67	\$ 345.95
Kids Under Cover	\$ 126.31	\$ 2,688.83
Malcolm Sargent Cancer Fund for Children	\$ 124.63	\$ 3,862.35
Parkinson's Victoria Inc	\$ 116.60	\$ 4,472.96
Yooralla	\$ 115.47	\$ 706.12
The Lost Dogs Home	\$ 111.51	\$ 1,471.64
Blue Ribbon Foundation	\$ 104.39	\$ 975.01
St Johns Primary School	\$ 103.45	\$ 2,778.06
South Warrandyte Fire Brigade	\$ 103.04	\$ 3,321.94
Odyssey House Victoria	\$ 97.57	\$ 3,067.07
Leukaemia Research and Support Fund - The Children's Hospital at Westmead	\$ 94.97	\$ 1,320.73
Open Family Australia Incorporated	\$ 85.47	\$ 1,646.15
The Cancer Council Western Australia	\$ 82.09	\$ 401.93
TLC for Kids INC	\$ 81.88	\$ 1,688.69
LRH - Cancer Care Centre	\$ 80.30	\$ 368.36
Melbourne East Netball Association	\$ 79.35	\$ 1,277.14
Waverley Christian Fellowship Inc	\$ 78.97	\$ 2,430.46
Meniere's Support Group	\$ 76.74	\$ 674.43
The Oaktree Foundation	\$ 72.35	\$ 150.35
Lighthouse Foundation Inc	\$ 64.80	\$ 1,644.17
Hanover Welfare Service	\$ 64.22	\$ 1,534.06
Vision Australia	\$ 64.11	\$ 4,851.94
Bone Marrow Donor Institute	\$ 61.15	\$ 442.80
Holden Sporting Car Club Inc	\$ 60.87	\$ 864.24
Sacred Heart School	\$ 58.50	\$ 286.76
Starlight Childrens Foundation	\$ 54.28	\$ 1,420.87
Monash Medical Centre - Paediatric Unit	\$ 53.83	\$ 1,561.35
One in Five - Mental Health Research Appeal	\$ 52.02	\$ 300.38
Goulburn Valley Community Fund	\$ 51.69	\$ 1,957.61
Peninsula Animal Aid	\$ 51.47	\$ 1,736.23
Waverley Hockey Club	\$ 49.63	\$ 1,539.47
Sane Australia	\$ 45.61	\$ 1,885.74
Doncare Community Services	\$ 44.97	\$ 1,204.66
Blackburn Community Church of Christ	\$ 44.46	\$ 873.20



WSPA	\$	43.84	\$	357.77
Variety Club of Victoria Inc	\$	43.56	\$	1,596.67
Shane Warne Foundation	\$	40.45	\$	815.92
Eastern Emergency Relief Network	\$	40.25	\$	154.09
South Warrandyte Hawks Cricket Club	\$	40.19	\$	825.97
St Gerard's Primary School	\$	39.95	\$	807.29
Frankston YCW Junior Football Club	\$	39.30	\$	407.55
Mount Dandenong Primary School	\$	38.22	\$	430.18
Virtual Reality Association	\$	38.00	\$	336.94
Frankston Football Club Inc	\$	37.92	\$	790.19
Child & Family Care Network	\$	37.42	\$	974.68
Life Education Australia	\$	37.33	\$	1,041.82
The Fred Hollows Foundation	\$	35.79	\$	1,365.65
Tintern Girls Grammar School	\$	35.63	\$	820.01
Typo Station	\$	35.59	\$	282.07
Nunawading Swimming Club Inc	\$	34.10	\$	1,164.45
Holy Spirit Community School	\$	33.40	\$	155.38
Epilepsy Foundation of Victoria	\$	33.13	\$	142.64
The Bridge Youth Services	\$	32.89	\$	824.73
Save the Bilby Fund	\$	32.79	\$	258.99
Metropolitan Traffic Education Centre	\$	32.78	\$	1,078.11
Animal Liberation Victoria	\$	32.60	\$	414.66
St Peter Julian Eymard Parish	\$	31.25	\$	350.19
Cerebral Palsy Education Centre	\$	31.11	\$	1,064.13
The Norva Dahlia Foundation	\$	30.79	\$	400.58
Valley Christian Fellowship	\$	30.76	\$	789.19
St Peters & St Pauls Church	\$	29.11	\$	525.64
Convoy For Kids Inc	\$	28.61	\$	290.71
Alzheimer's Australia Vic	\$	28.56	\$	143.00
Australian Bush Heritage Fund	\$	28.51	\$	404.43
JewishCare - Aged Care Services	\$	26.42	\$	646.93
Diabetes Australia - Victoria	\$	26.31	\$	1,071.11
Westbreen Primary School	\$	26.27	\$	204.66
Lupus Australia Foundation Inc (Victoria)	\$	25.48	\$	48.50
Asian Aid Organisation Limited	\$	25.35	\$	224.66
Motor Neurone Disease Association of Victoria Inc	\$	24.99	\$	39.54
Victorian Ferret Society Inc	\$	24.95	\$	389.33
The Saints Junior Basketball Club	\$	24.81	\$	554.51
The Wishbone Foundation	\$	24.63	\$	674.57
Compassion Australia	\$	24.44	\$	787.63
Narconon Melbourne	\$	24.34	\$	244.06
The Allannah and Madeline Foundation	\$	23.89	\$	1,009.86
Juvenile Diabetes Research Foundation	\$	22.73	\$	578.64
Breast Screen Clinic - St Vincents Hospital Foundation	\$	22.61	\$	437.88
World Wildlife Fund	\$	21.83	\$	172.64
Australian Conservation Foundation	\$	21.83	\$	172.62
Christian Outreach Centre Plenty Valley	\$	21.23	\$	645.22
Mt Dandenong/Kalorama Rural Fire Brigade	\$	21.09	\$	346.90
Arthritis Foundation of Victoria Inc	\$	21.08	\$	404.28
Port Stephens Cricket Club	\$	20.64	\$	1,123.00
Autism Victoria	\$	20.44	\$	20.44
NIDKIDS	\$	20.33	\$	219.66
Solace EMC	\$	20.17	\$	78.73
Maroondah Hospital	\$	19.98	\$	149.40
Congupna Primary School	\$	19.70	\$	529.35
Cystic Fibrosis Victoria	\$	18.94	\$	77.11
The Smith Family	\$	18.78	\$	877.15
Hawthorn Secondary College	\$	17.78	\$	170.77
St Mary's Primary School	\$	17.78	\$	170.74
Edar Limited	\$	17.78	\$	138.80
CFA Nar Nar Goon	\$	17.28	\$	223.44
Burke & Beyond	\$	16.23	\$	688.49
Ballan Lions Club	\$	15.92	\$	371.09
Voice of the Martyrs	\$	15.32	\$	558.95
East Gippsland Animal Aid	\$	15.25	\$	30.87
Hampton Football Club	\$	15.05	\$	720.73
GV Health	\$	15.05	\$	444.51
Williamstown North Primary School	\$	14.89	\$	457.82
Mansfield Primary School	\$	14.71	\$	442.12
Australian Breastfeeding Association - Inner Urban Group	\$	14.68	\$	382.42
St Andrew's Kindergarten	\$	13.91	\$	238.75
Goulburn Valley Football League	\$	13.38	\$	404.79
Conservation Volunteers	\$	13.23	\$	771.88
Goulburn Valley Hospice Care Service Inc	\$	12.72	\$	382.91



Australian Childhood Foundation	\$ 12.71	\$ 498.78
CFA Upper Beaconsfield	\$ 12.68	\$ 221.85
Bentleigh Golf Club	\$ 12.30	\$ 721.39
Guide Dogs	\$ 12.11	\$ 645.61
Pakenham Urban Fire Brigade	\$ 11.65	\$ 126.20
St Bernards Football Club	\$ 10.81	\$ 299.51
B.I.R.D.S	\$ 10.62	\$ 547.79
Friends of the Earth	\$ 10.61	\$ 193.17
Lower Yarra Group CFA	\$ 10.45	\$ 226.87
Kilmore State Emergency Services	\$ 10.28	\$ 151.59
Wanganui Park High School Junior F/ball Club	\$ 10.19	\$ 267.70
Shepparton Auskick	\$ 9.78	\$ 248.40
Club Solo Ministries	\$ 9.53	\$ 18.46
Angel Flight Australia	\$ 9.14	\$ 905.32
Mt Evelyn Fire Brigade - CFA	\$ 8.41	\$ 101.93
Australian Volunteer Coast Guard	\$ 8.14	\$ 8.14
CFA Creightons Creek	\$ 6.51	\$ 116.73
Heart Research Centre	\$ 6.41	\$ 198.18
CRU Morokai Grove Lilydale	\$ 6.28	\$ 136.61
Alsajad Association Inc	\$ 5.95	\$ 278.33
RCH Children's Cancer Centre	\$ 5.76	\$ 14.74
Mortlake Urban Fire Brigade	\$ 5.64	\$ 105.41
Melbourne Citymission Inc	\$ 5.61	\$ 1,088.23
St Johns Church Frankston	\$ 5.57	\$ 284.23
Ferntree Gully Urban Fire Brigade	\$ 5.24	\$ 41.56
CFA Swan Hill Urban Fire Brigade	\$ 4.69	\$ 51.80
West Gippsland Healthcare Group	\$ 3.58	\$ 28.68
Mordialloc Surf Lifesaving	\$ 2.88	\$ 517.70
Australian Red Cross	\$ 2.66	\$ 794.46
Christian Blind Mission International	\$ 2.15	\$ 26.42
Xavier College	\$ 1.91	\$ 235.08
Breast Cancer Network of Australia	\$ -	\$ 1,567.99
Yeshivah Centre - Council for Jewish Education in Schools	\$ -	\$ 621.96
Park Orchards Primary School	\$ -	\$ 595.77
Serpell Primary School	\$ -	\$ 551.50
Berry Street Victoria	\$ -	\$ 541.85
Victorian Deaf Society	\$ -	\$ 513.36
Tatura Primary School	\$ -	\$ 432.58
United Israel Appeal	\$ -	\$ 407.76
International Fund for Animal Welfare	\$ -	\$ 353.39
Shepparton CFA	\$ -	\$ 287.07
The MS Society of Victoria	\$ -	\$ 274.58
Leawarra Calisthenics	\$ -	\$ 243.34
AESSRA Inc	\$ -	\$ 238.75
Calvary Health Care Bethlehem Limited	\$ -	\$ 231.66
Frankston & District Basketball Association	\$ -	\$ 193.73
The Lymphoedema Association of Australia	\$ -	\$ 178.20
Edithvale Pre-School	\$ -	\$ 173.13
Village School Incorporated	\$ -	\$ 151.93
St Catherines Catholic School	\$ -	\$ 141.21
Shepparton United Football Club	\$ -	\$ 130.60
St Andrew's Anglican Church	\$ -	\$ 127.77
Central Highlands Bird Of Prey Shelter	\$ -	\$ 120.07
St. Vincent De Paul Society Victoria Inc	\$ -	\$ 83.56
Upwey Tecoma Cricket Club	\$ -	\$ 58.22
Presbyterian Ladies College - Junior School	\$ -	\$ 50.02
Frankston CFA	\$ -	\$ 44.87
Goulburn Region Foster Families Association	\$ -	\$ 14.53
Alcohol & Drug Foundation Act Inc	\$ -	\$ -
Camberwell Grammar School Foundation Pty Ltd	\$ -	\$ -
CFA Olinda	\$ -	\$ -
Christian World Service	\$ -	\$ -
Injured Wildlife Transport Service Inc	\$ -	\$ -
International Needs	\$ -	\$ -
Muscular Dystrophy Association Inc	\$ -	\$ -
SIDS & Kids Victoria	\$ -	\$ -
SPEECH Early Childhood Intervention Service	\$ -	\$ -
The Asthma Foundation of Victoria	\$ -	\$ -
The Big Issue In Australia Limited	\$ -	\$ -
Wandin Yallock Primary School	\$ -	\$ -
Totals	\$ 12,010.23	\$ 255,595.56



**CELEBRATING OVER \$250,000 IN DONATIONS
TO OVER 200 NON-PROFIT ORGANISATIONS**